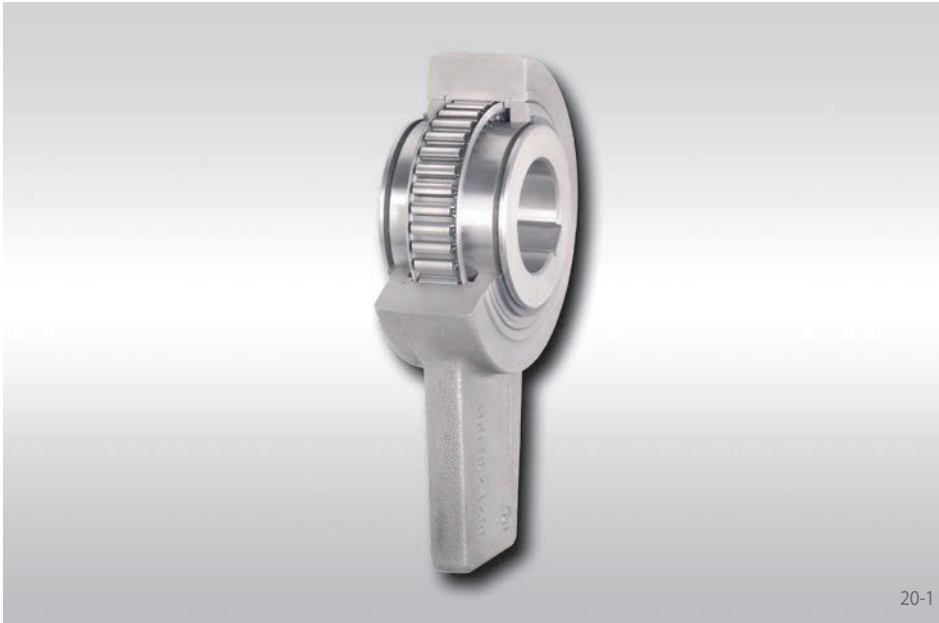


# Complete Freewheels FA

with torque arm  
with sprags and grease lubrication



20-1

## Application as

- ▶ Backstop
- ▶ Indexing Freewheel

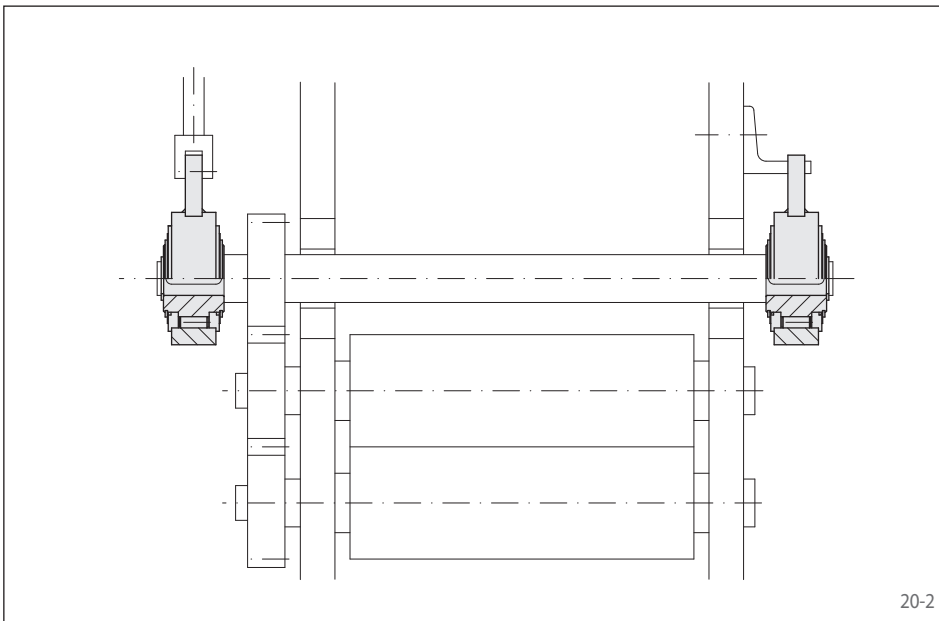
For application as backstop in installations with low speeds in freewheeling operation. For application as indexing freewheel in installations with low to medium total number of actuations.

## Features

Complete Freewheels FA with torque arm are sprag freewheels with sleeve bearings. They are grease-lubricated and require no maintenance.

Maximum torques up to 3 690 lb-ft.

Bores up to 3.15 inch.



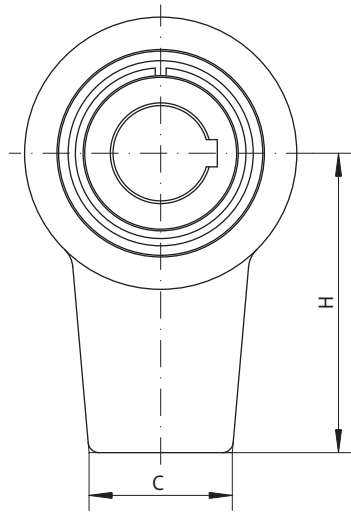
20-2

## Application example

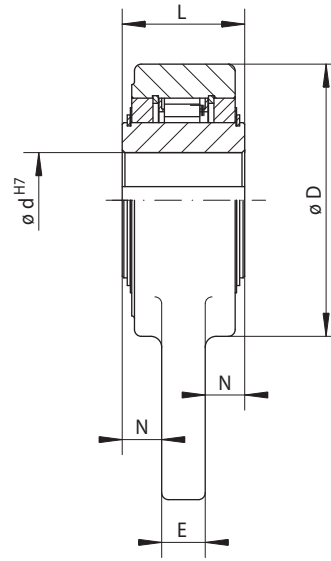
Two Complete Freewheels FA 57 in the roller feed of a sheet metal processing machine. The indexing freewheel arranged on the left is driven via a bell crank with an adjustable lift. This enables an infinite setting of the feed. The backstop arranged on the right prevents the indexing rollers from running backwards while the indexing freewheel carries out its back stroke. Often, an additional small brake is provided in order to prevent the accelerated sheet metal strip from advancing.

# Complete Freewheels FA

with torque arm  
with sprags and grease lubrication



21-1



21-2

Indexing Freewheel Backstop	Standard type	Dimensions												
	For universal use													

Freewheel Size	Type	Maximum torque $M_M$ lb-ft	Nominal torque $M_N$ lb-ft	Max. speed inner ring freewheels rpm	Bore d max. inch	C inch	D inch	E inch	H inch	L inch	N inch	Weight lbs
FA 37	SF	340	170	250	0.984	1.378	2.992	0.472	3.543	1.378	0.453	2.2
FA 57	SF	930	465	170	1.650	1.969	3.937	0.630	4.921	1.772	0.571	5.5
FA 82	SF	2360	1180	130	2.560	2.362	5.512	0.709	6.299	2.362	0.827	12.2
FA 107	SF	3690	1845	90	3.350	3.150	6.693	0.787	7.087	2.559	0.886	18.8

See page 9 for determination of selection torque.  
Keyway dimensions upon request by customers.

## Mounting

When used as a backstop, the backdriving torque is supported by the torque arm. The torque arm must not be clamped into position. It must have 0.002 to 0.008 inch play in the axial and radial directions.

When used as an indexing freewheel, the torque arm serves as the indexing lever arm.

The torque arm is not heat treated enabling the customer alter the torque arm to suit his application.

The recommended tolerance of the shaft is + 0 / - 0.001 inch.