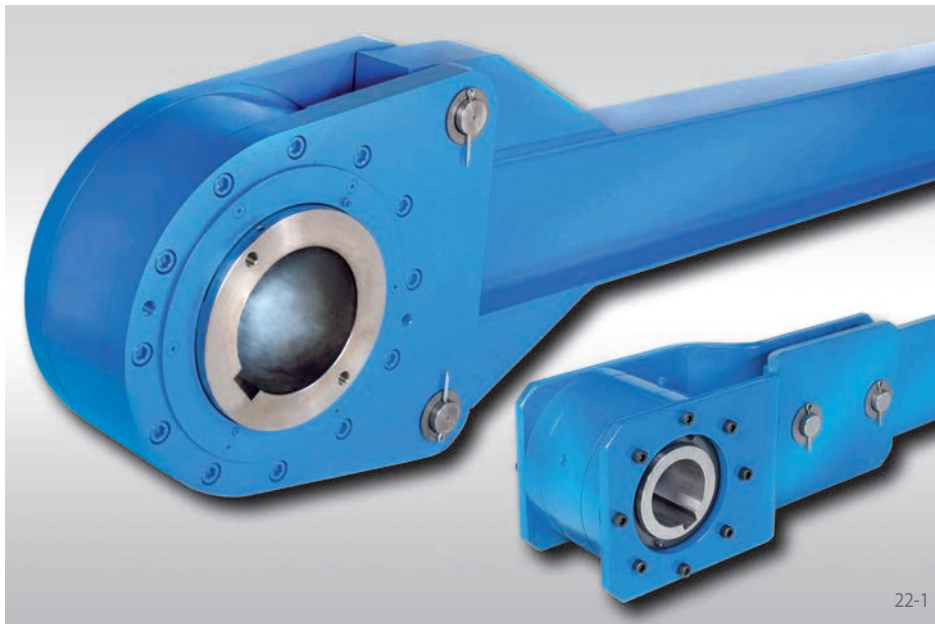


# Low Speed Backstops FRHD

with torque arm  
with sprags



## Application as

### Backstop

for installations with low speeds. The freewheels are designed for the use in inclined conveyor-belts, elevators or pumps. Taconite seals protect the freewheels from contamination with dust or dirt.

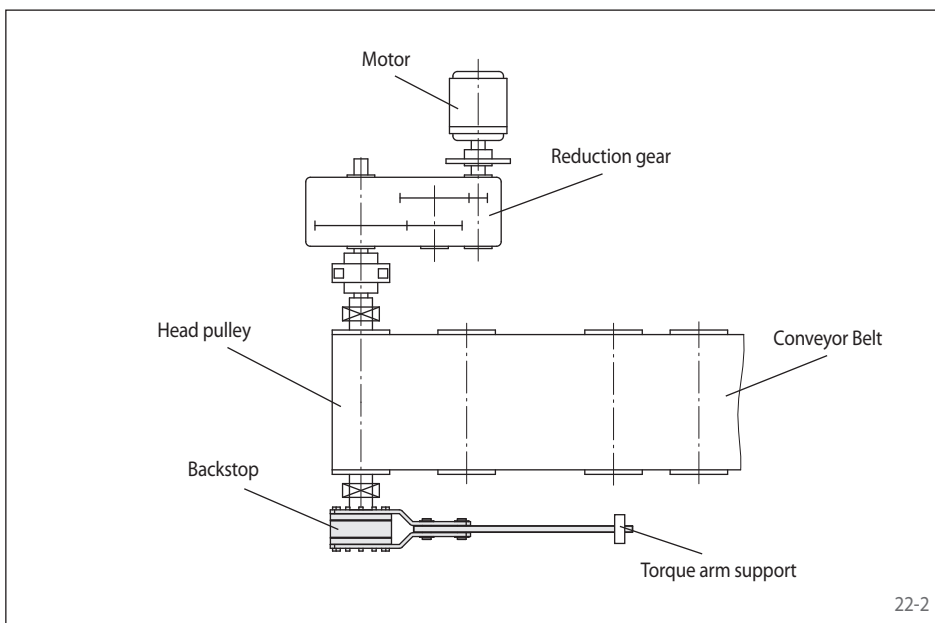
### Features

Low Speed Backstops FRHD with torque arm are sealed sprag freewheels with ball bearings. They are supplied oil-filled and ready for installation.

The Low Speed Backstops are arranged on through shafts or shaft ends.

Maximum torques up to 2 400 000 lb-ft.

Bores up to 21 inch.



## Application example

Backstop FRHD 900 on the head pulley shaft of an inclined conveyor belt system. The torque arm is bolted to the freewheel. The back driving torque is restrained by the torque arm on the base plate. When the conveyor belt is without any load, the drum shaft can be turned in both directions during maintenance by removing the torque arm pins.

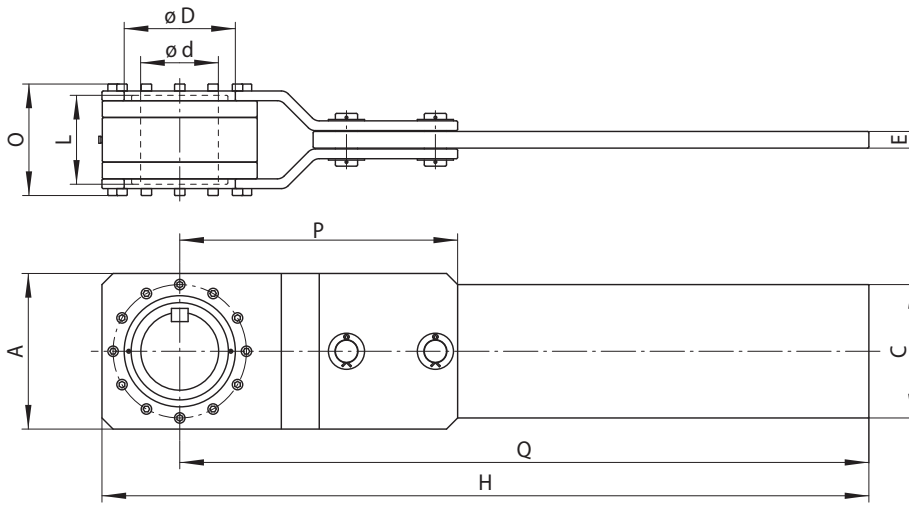


## Mounting

The backdriving torque is restrained by the torque arm. The torque arm must not be clamped into position. It must have 0.5 inch play in the axial and in the radial direction.

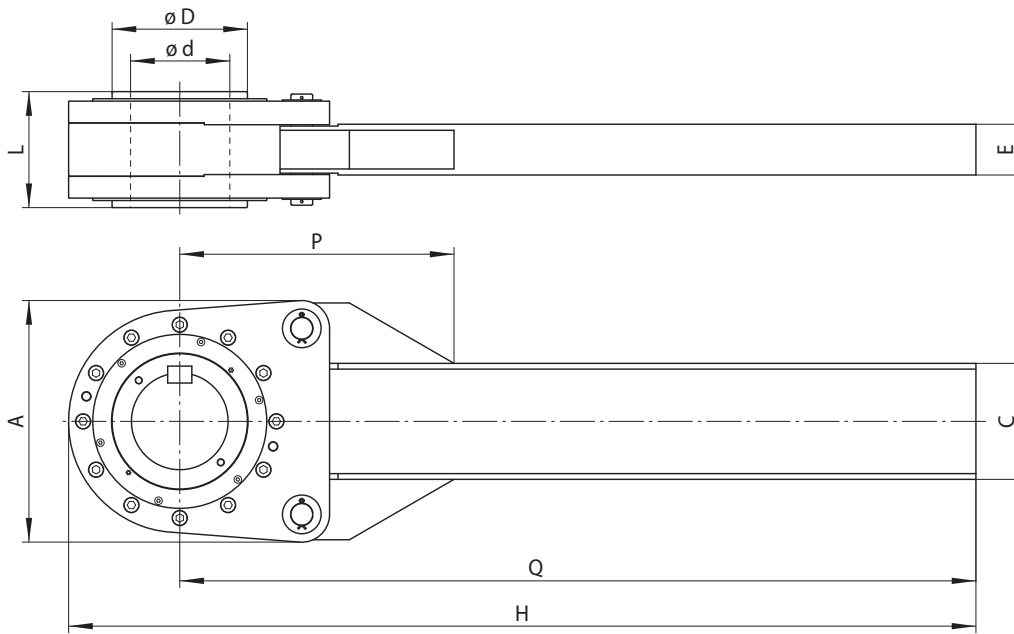
# Low Speed Backstops FRHD

with torque arm  
with sprags



Size FRHD 700 to FRHD 950 and FRHD 1 050

23-1



Size FRHD 1000 and FRHD 1 100 to FRHD 1 900

23-2

Backstop	Standard type	Dimensions													
	For universal use														

Freewheel Size	Maximum torque $M_M$ lb-ft	Nominal torque $M_N$ lb-ft	Maximum speed inner ring freewheels rpm	Bore d max. inch	A inch	C inch	D inch	E inch	H inch	L inch	O inch	P inch	Q inch	Weight lbs
FRHD 700	7 500	3 750	620	3.44	8.00	6.00	5.25	0.50	36.00	6.00	6.75	16.38	32.00	135
FRHD 775	15 000	7 500	540	3.75	9.75	8.00	6.00	1.00	42.88	7.50	9.00	20.38	38.00	310
FRHD 800	24 000	12 000	460	4.50	10.50	10.00	7.00	1.00	43.25	8.00	9.50	22.13	38.00	360
FRHD 900	37 000	18 500	400	5.44	12.00	10.00	8.00	1.50	54.00	7.63	9.38	22.75	48.00	480
FRHD 950	46 000	23 000	360	7.00	14.00	12.00	10.00	1.50	69.00	8.00	10.00	25.00	62.00	530
FRHD 1000	56 000	28 000	360	7.00	17.00	8.00	9.00	4.13	80.38	8.75	-	23.13	72.00	550
FRHD 1050	90 000	45 000	360	7.00	14.00	12.00	10.00	1.50	79.00	10.50	12.50	29.00	72.00	600
FRHD 1100	90 000	45 000	360	7.00	17.00	8.00	9.00	4.13	80.38	10.00	-	23.13	72.00	795
FRHD 1200	185 000	92 500	250	9.00	23.00	10.00	12.00	4.94	89.00	11.00	-	28.00	78.00	1300
FRHD 1300	220 000	110 000	220	10.00	25.00	12.00	14.00	5.25	95.00	12.00	-	30.00	82.88	1674
FRHD 1400	280 000	140 000	200	12.00	30.00	18.00	16.00	6.25	107.00	13.00	-	36.00	94.00	2200
FRHD 1450	380 000	190 000	200	12.00	30.00	18.00	16.00	6.25	107.00	15.00	-	36.00	94.00	2500
FRHD 1500	580 000	290 000	200	12.00	31.00	18.00	15.13	6.25	107.00	17.62	-	36.00	94.00	2440
FRHD 1600	746 000	373 000	140	14.00	32.50	20.00	17.63	6.25	124.00	19.25	-	30.44	108.00	3400
FRHD 1700	1 250 000	625 000	120	18.00	42.50	24.50	23.00	7.88	140.00	20.00	-	48.00	120.00	7000
FRHD 1800	1 800 000	900 000	100	21.00	52.00	30.00	26.50	10.50	170.00	23.00	-	54.00	144.00	12 000
FRHD 1900	2 400 000	1 200 000	60	21.00	52.00	30.00	27.00	10.50	216.00	27.00	-	54.00	192.00	14 000

See page 9 for determination of selection torque. • Keyway dimensions upon request by customers.