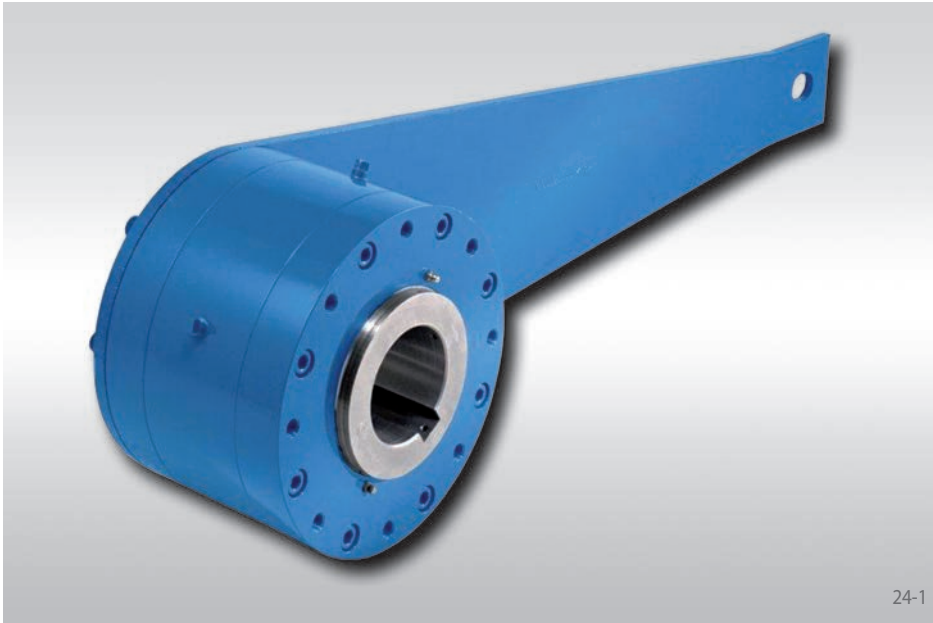


Low Speed Backstops FRHM

with torque arm
with sprags



24-1

Application as

▶ Backstop

for installations with low speeds. The freewheels are designed for the use in inclined conveyor-belts, elevators or pumps. Taconite seals protect the freewheels from contamination with dust or dirt.

Features

Low Speed Backstops FRHM with torque arm are sealed sprag freewheels with ball bearings. They are designed for interchanging the Morse® CB units, supplied oil-filled and ready for installation.

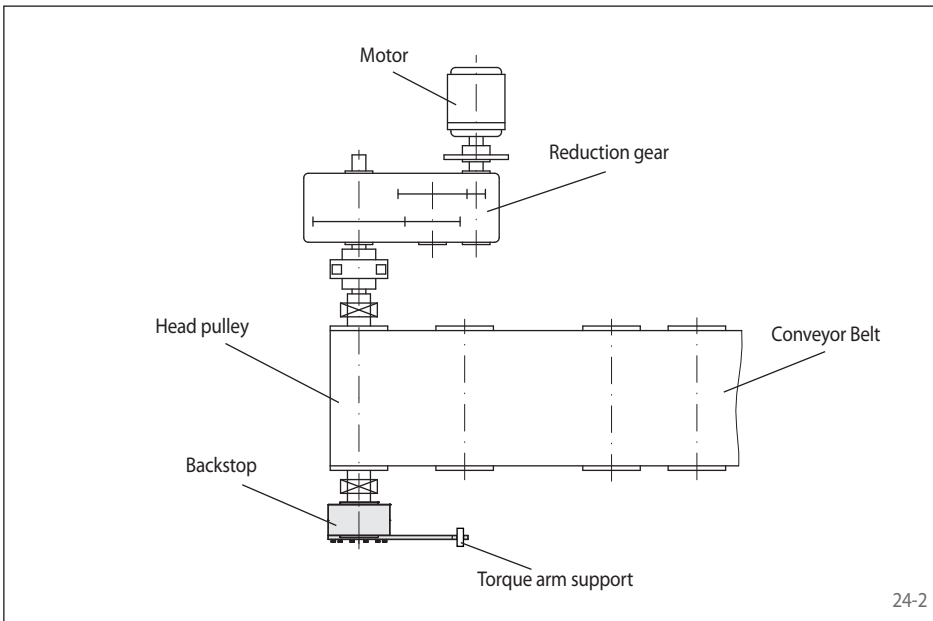
The Low Speed Backstops FRHM are arranged on through shafts or shaft ends.

Maximum torques up to 56 000 lb-ft.

Bores up to 7 inch.

Application example

Backstop FRHM 900-12 on the head pulley shaft of an inclined conveyor. The back driving torque is restricted by the torque arm on the base plate.



24-2

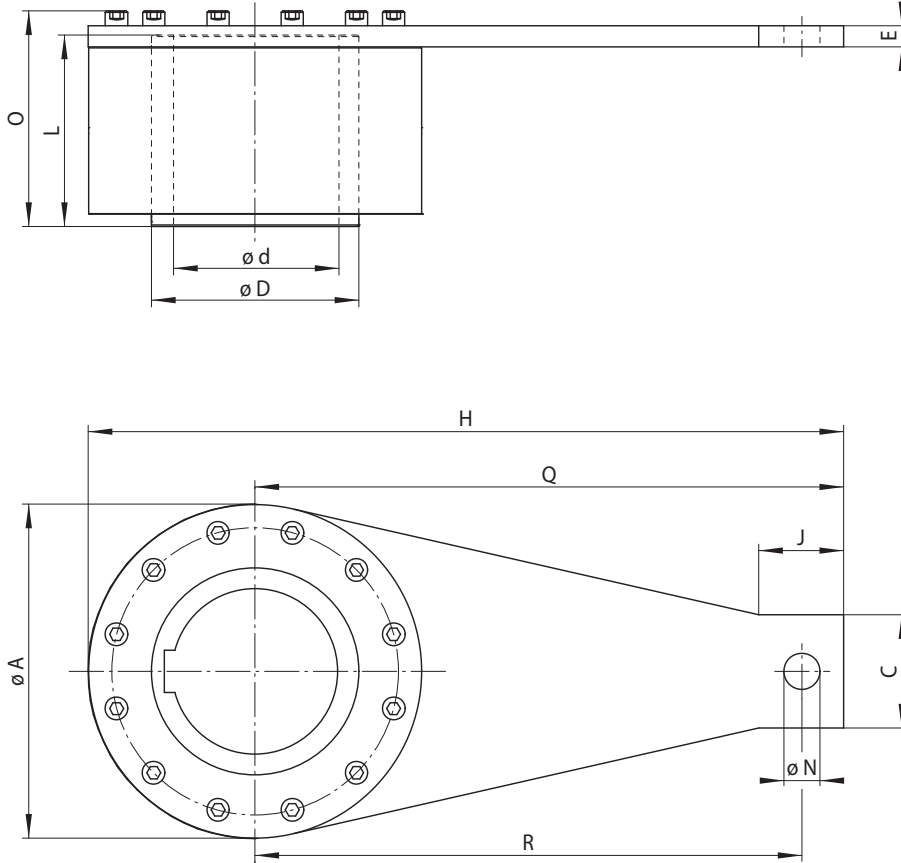
Mounting

The back driving torque is restrained by the torque arm. The torque arm must not be clamped into position. It must have 0.5 inch play in the axial and in the radial direction.

FRHM backstops are supplied for a clearance fit. Set screws on the inner ring are provided for axial retention, shaft collars are not required.

Low Speed Backstops FRHM

with torque arm
with sprags



25-1

Backstop	Standard type	Dimensions														
	For universal use															

Freewheel Size	Maximum torque M_M	Nominal torque M_N	Maximum speed inner ring freewheels rpm	Bore d	A	C	D	E	H	J*	L*	N	O	Q	R*	Weight
	lb-ft	lb-ft		max. inch	inch	inch	inch	inch	inch	inch	inch	inch	inch	inch	inch	inch
FRHM 700-7	7500	3750	620	3.44	8.00	4.38	5.25	0.50	21.00	3.56	6.00	1.25	6.63	17.00	15.25	105
FRHM 775-7	15000	7500	540	3.75	9.75	4.38	6.00	0.50	21.88	3.56	7.50	1.25	8.13	17.00	15.25	160
FRHM 800-7	24000	12000	460	4.50	10.50	4.38	7.00	0.50	22.25	3.56	8.00	1.25	8.63	17.00	15.25	190
FRHM 800-12	24000	12000	460	4.50	10.50	4.75	7.00	0.50	25.50	3.56	8.00	1.25	8.63	20.25	18.63	200
FRHM 900-12	37000	18500	400	5.44	12.00	4.75	8.00	0.50	26.25	3.56	7.63	1.25	8.38	20.25	18.63	210
FRHM 900-19	37000	18500	400	5.44	12.00	4.75	8.00	0.88	30.63	3.56	7.63	1.50	8.75	24.63	22.88	220
FRHM 1000-19	56000	28000	360	7.00	16.50	4.75	9.00	0.88	32.89	3.56	8.75	1.50	9.13	24.63	22.88	270
FRHM 1000-30	56000	28000	360	7.00	16.50	5.25	9.00	0.88	33.25	3.56	8.75	1.75	9.13	25.00	23.00	275

See page 9 for determination of selection torque.

Keyway dimensions upon request by customers.

* Shaft length L and stirrup position J or pin position R should be considered. These dimensions may vary from the Morse® Series CB.